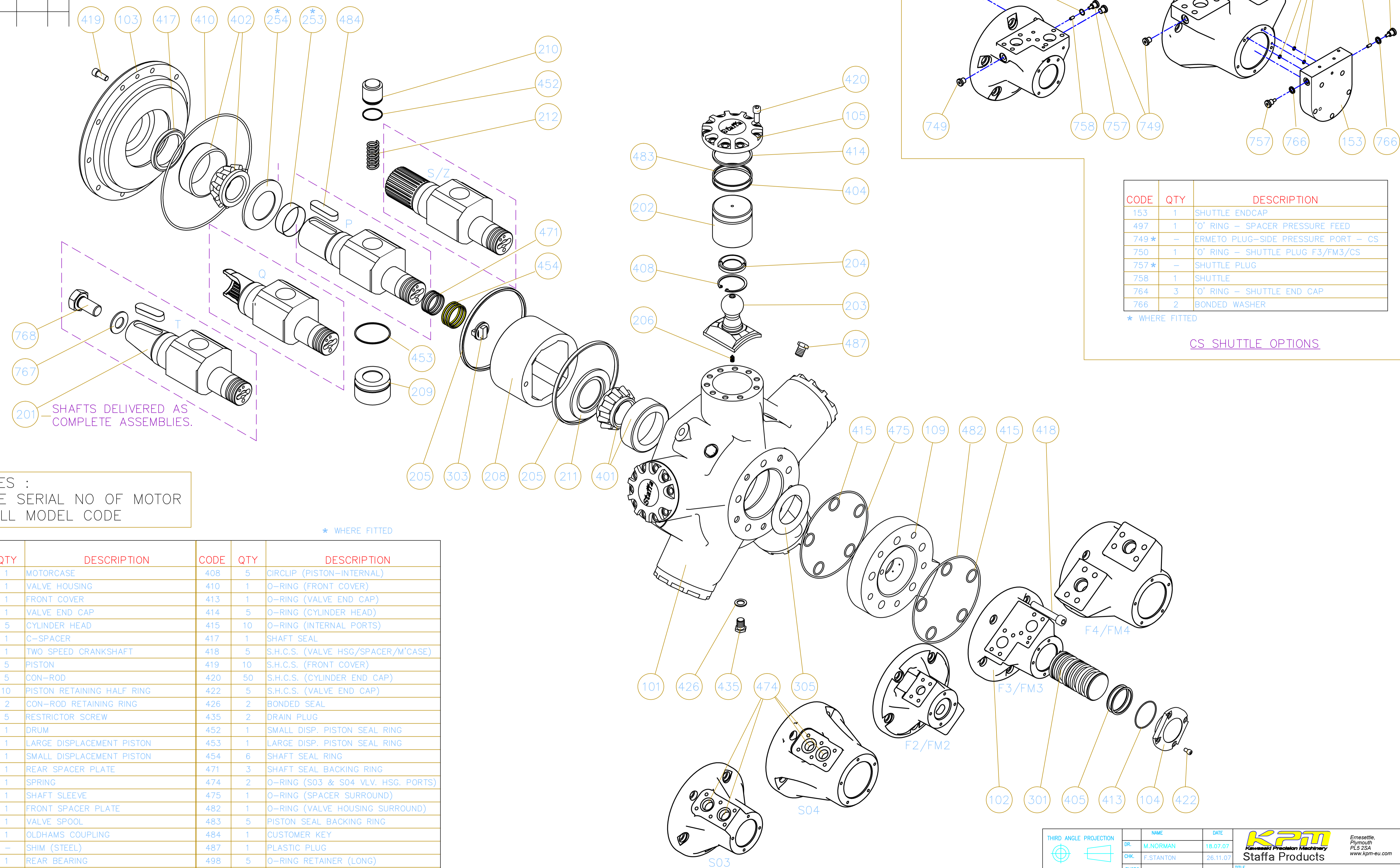


DRAWING No. 016318

ISSUE	CHANGE	DATE	CHK.
A		07.07	F.S
B		01.12	FS

DO NOT SCALE

IF IN DOUBT-ASK



201 SHAFTS DELIVERED AS COMPLETE ASSEMBLIES.

SPARES :
QUOTE SERIAL NO OF MOTOR
+ FULL MODEL CODE

CODE	QTY	DESCRIPTION
153	1	SHUTTLE ENDCAP
497	1	'O' RING - SPACER PRESSURE FEED
749*	-	ERMETO PLUG-SIDE PRESSURE PORT - CS
750	1	'O' RING - SHUTTLE PLUG F3/FM3/CS
757*	-	SHUTTLE PLUG
758	1	SHUTTLE
764	3	'O' RING - SHUTTLE END CAP
766	2	BONDED WASHER

* WHERE FITTED

CS SHUTTLE OPTIONS

* WHERE FITTED

CODE	QTY	DESCRIPTION	CODE	QTY	DESCRIPTION
101	1	MOTORCASE	408	5	CIRCLIP (PISTON-INTERNAL)
102	1	VALVE HOUSING	410	1	O-RING (FRONT COVER)
103	1	FRONT COVER	413	1	O-RING (VALVE END CAP)
104	1	VALVE END CAP	414	5	O-RING (CYLINDER HEAD)
105	5	CYLINDER HEAD	415	10	O-RING (INTERNAL PORTS)
109	1	C-SPACER	417	1	SHAFT SEAL
201	1	TWO SPEED CRANKSHAFT	418	5	S.H.C.S. (VALVE HSG/SPACER/M'CASE)
202	5	PISTON	419	10	S.H.C.S. (FRONT COVER)
203	5	CON-ROD	420	50	S.H.C.S. (CYLINDER END CAP)
204	10	PISTON RETAINING HALF RING	422	5	S.H.C.S. (VALVE END CAP)
205	2	CON-ROD RETAINING RING	426	2	BONDED SEAL
206	5	RESTRICTOR SCREW	435	2	DRAIN PLUG
208	1	DRUM	452	1	SMALL DISP. PISTON SEAL RING
209	1	LARGE DISPLACEMENT PISTON	453	1	LARGE DISP. PISTON SEAL RING
210	1	SMALL DISPLACEMENT PISTON	454	6	SHAFT SEAL RING
211	1	REAR SPACER PLATE	471	3	SHAFT SEAL BACKING RING
212	1	SPRING	474	2	O-RING (S03 & S04 VLV. HSG. PORTS)
253*	1	SHAFT SLEEVE	475	1	O-RING (SPACER SURROUND)
254*	1	FRONT SPACER PLATE	482	1	O-RING (VALVE HOUSING SURROUND)
301	1	VALVE SPOOL	483	5	PISTON SEAL BACKING RING
303	1	OLDHAMS COUPLING	484	1	CUSTOMER KEY
305	-	SHIM (STEEL)	487	1	PLASTIC PLUG
401	1	REAR BEARING	498	5	O-RING RETAINER (LONG)
402	1	FRONT BEARING	499	5	O-RING RETAINER (SHORT)
404	5	PISTON SEAL RING	767	1	KEEP PLATE
405	12	VALVE SEAL RING	768	1	HEX HEAD SCREW

THIRD ANGLE PROJECTION	NAME	M.NORMAN	DATE	18.07.07
	DR.	F.STANTON	DATE	26.11.07
	CHK.			
	ENGR. APPL.			
		Staffa Products <small>Ernesettle, Plymouth PL5 2QA www.kpm-eu.com</small>		
ALL TECHNICAL DATA DISCLOSED HEREIN IS THE PROPERTY OF KAWASAKI AND SHALL NOT BE USED BY OTHERS FOR MANUFACTURE, PROCUREMENT OR DISCLOSURE WITHOUT THE WRITTEN PERMISSION OF THE OWNER.				TITLE GENERAL ASSEMBLY (FOR SPARES) HMC/HPC MOTOR (030-200)
SIZE	A1	SCALE	NTS	DRAWING No.
				016318
				SHEET
				1 of 1