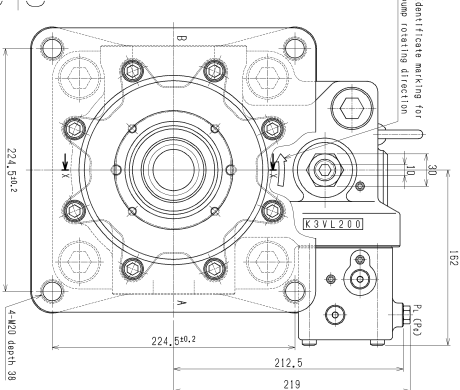
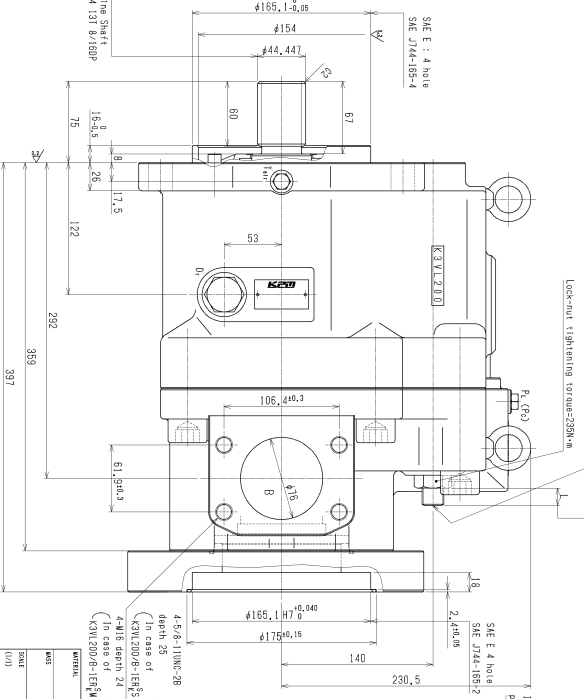
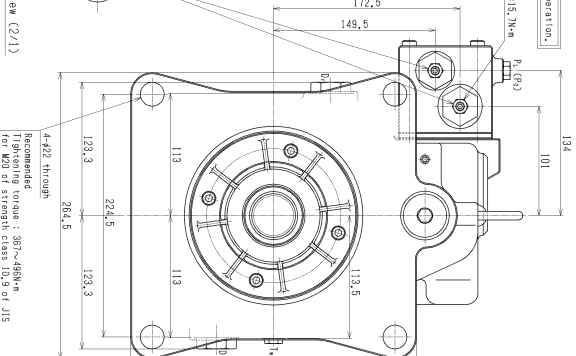
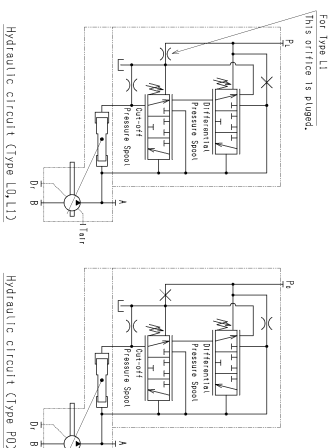
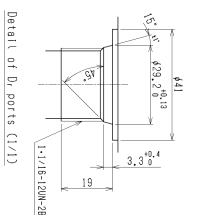
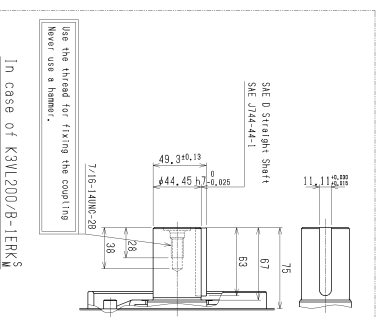


Operating specifications	
Displacement	cm <sup>3</sup>
Max. self priming speed	min <sup>-1</sup>
Rated pressure	MPa
Peak pressure	MPa
Pump model name	KJ4J200-B-1E

(1) The pump shaft and flange surfaces should be cleaned. Remove an anti-rust material.

- (a) The oil level in the tank should be upper than the pump mounting flange. (Fig. 1)
- If the oil level is lower than the pump level, forced lubrication should be made from the air bleeder port. (Flow 1-2 (air in))
- (c) Pressure in the tank should be lower than the pump level.
- (d) Open the drain port of the air bleeder port.
- (e) Installation outside a tank (Fig. 2)
- (1) Pipe the drain port and the air bleeder port to tank.
- (2) If the pipe for draining or air bleeding is upper than the oil level, it should be filled with oil before starting the pump.

[illegible]